

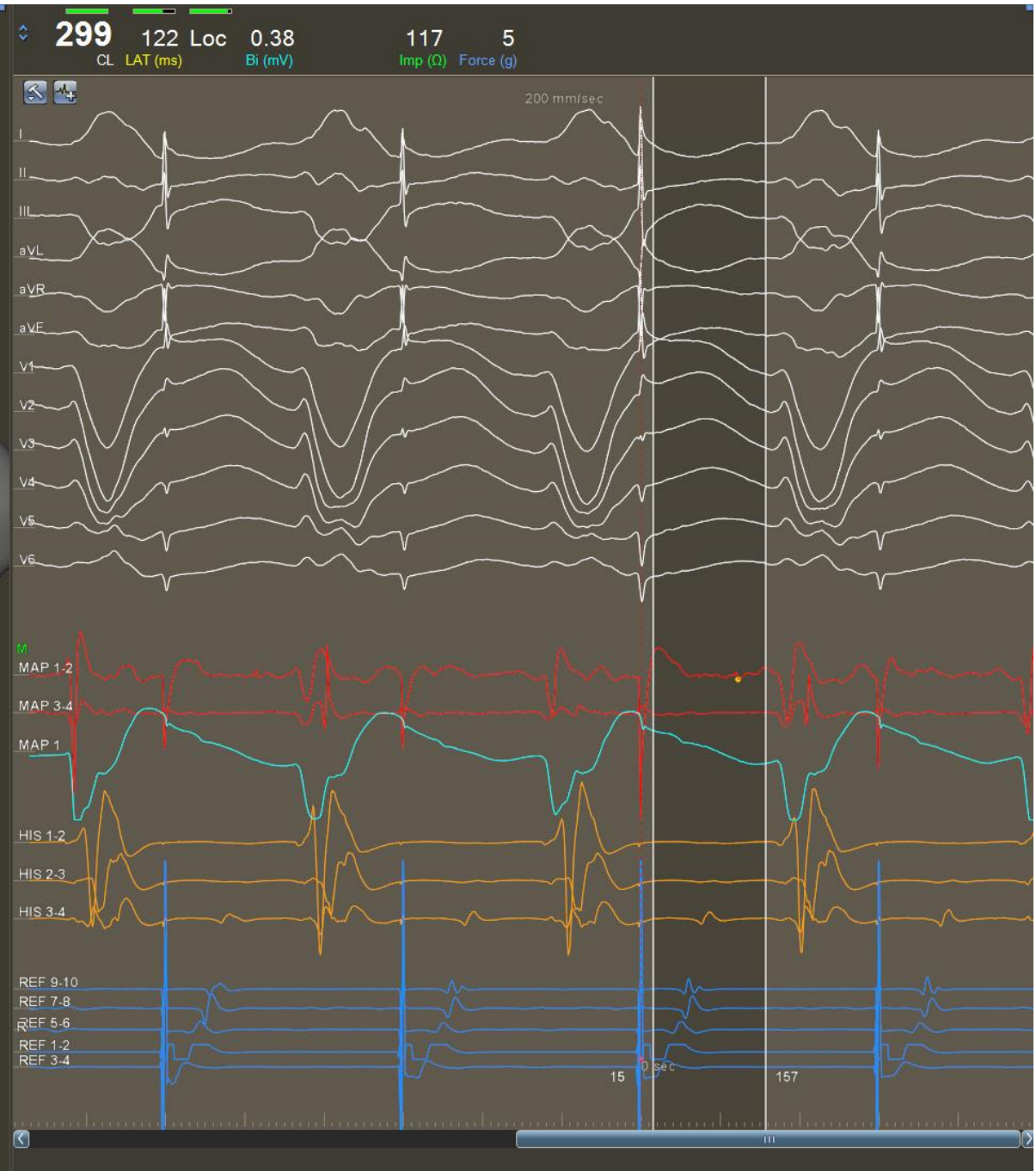
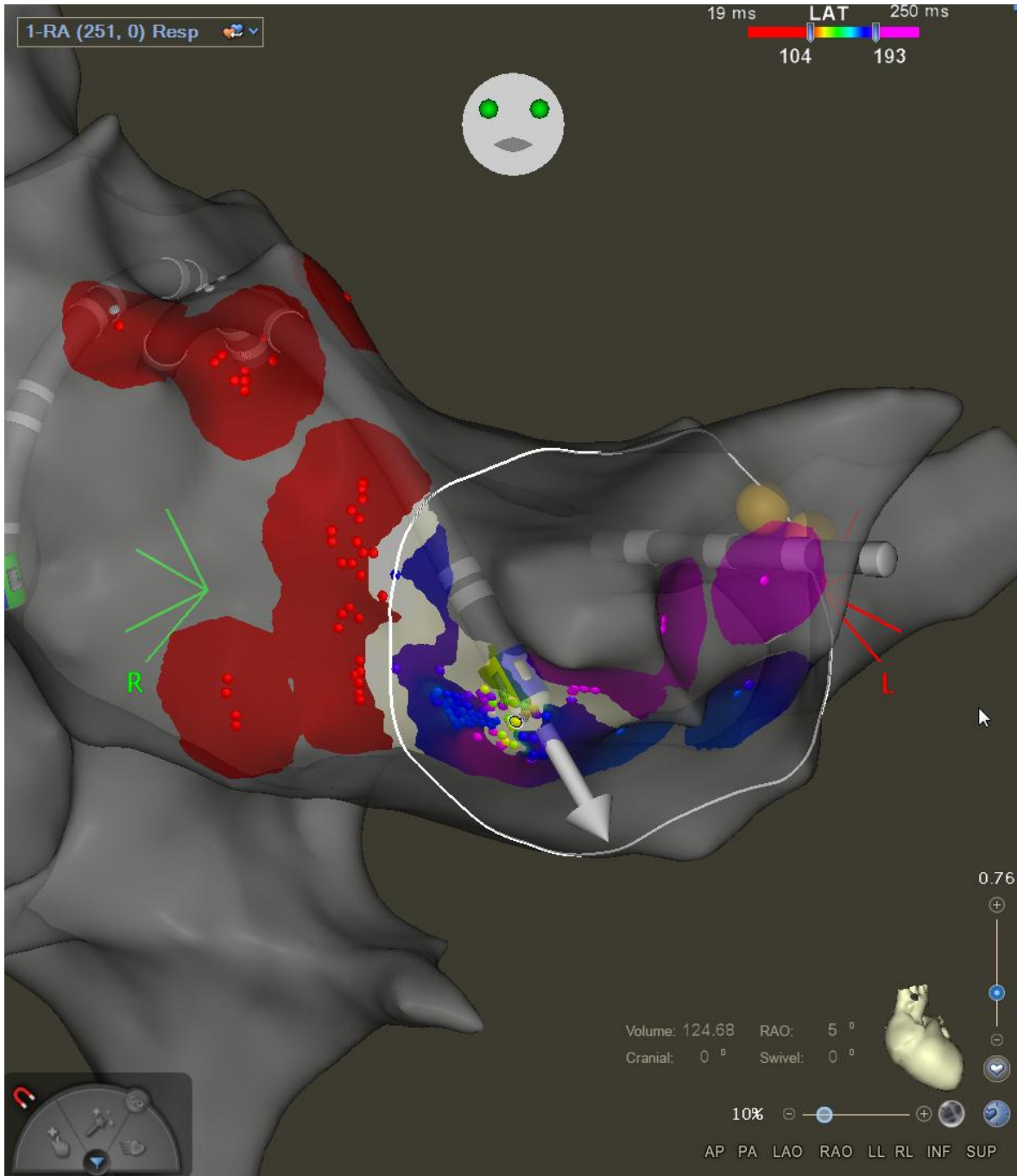


ASSOCIATION DE RYTHMOLOGIE
INTERVENTIONNELLE & STIMULATION

Mahaim

Dr Durand

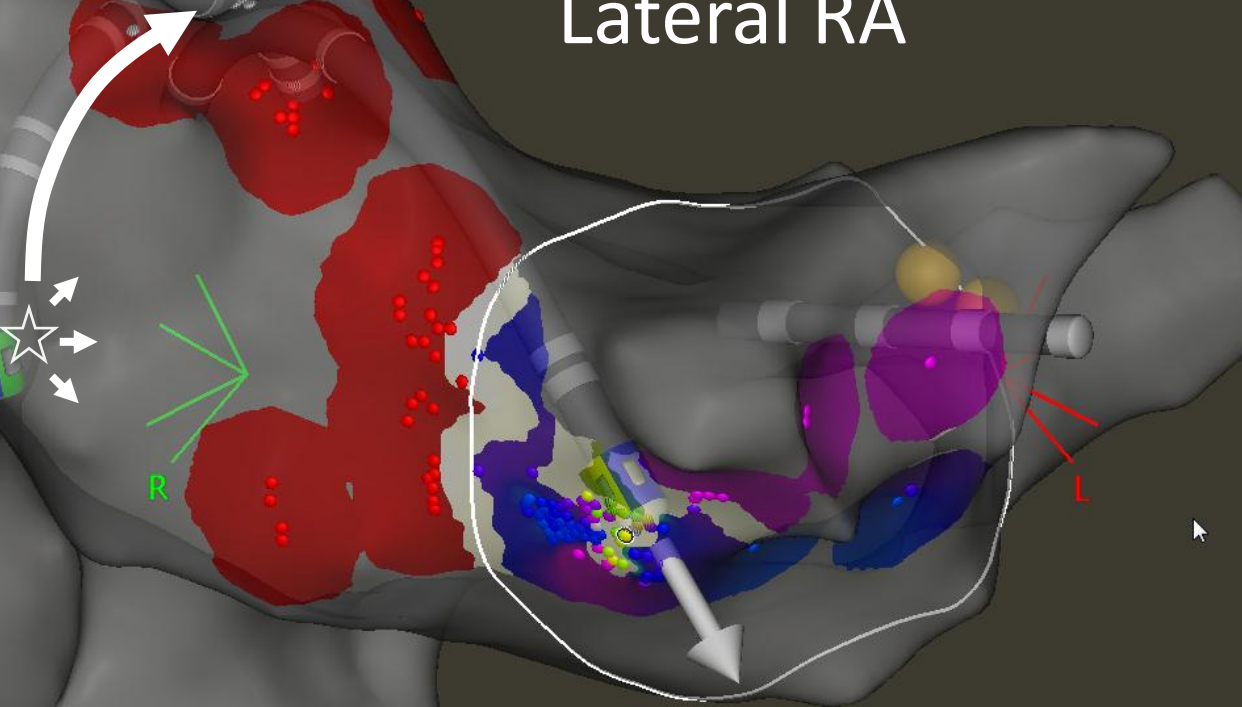
Novembre 2021 – Infirmierie Protestante



1-RA (251, 0) Resp



Pacing 300ms
Lateral RA

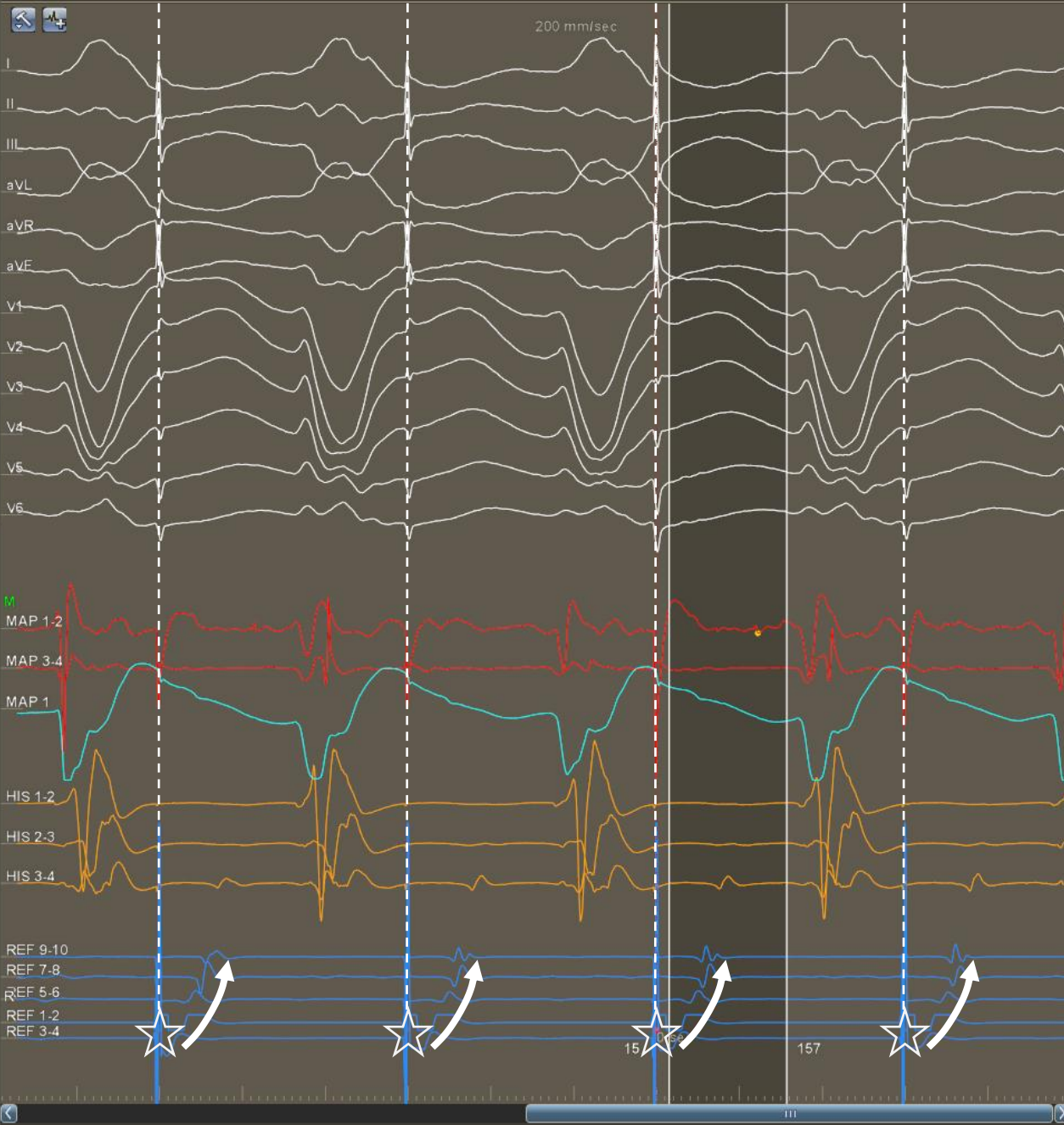


Volume: 124.68 RAO: 5°
Cranial: 0° Swivel: 0°

10%

AP PA LAO RAO LL RL INF SUP

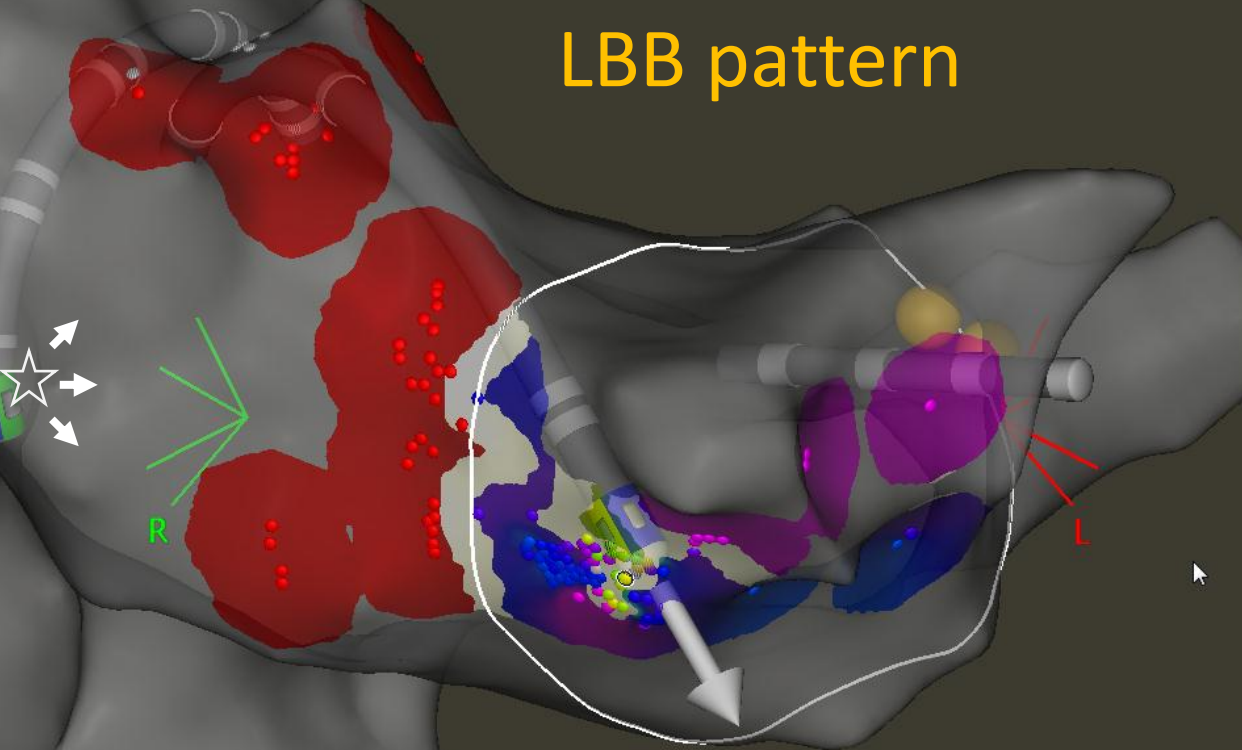
299 CL 122 Loc 0.38 117 5
LAT (ms) Bi (mV) Imp (Ω) Force (g)



1-RA (251, 0) Resp



Anterograde AP
LBB pattern

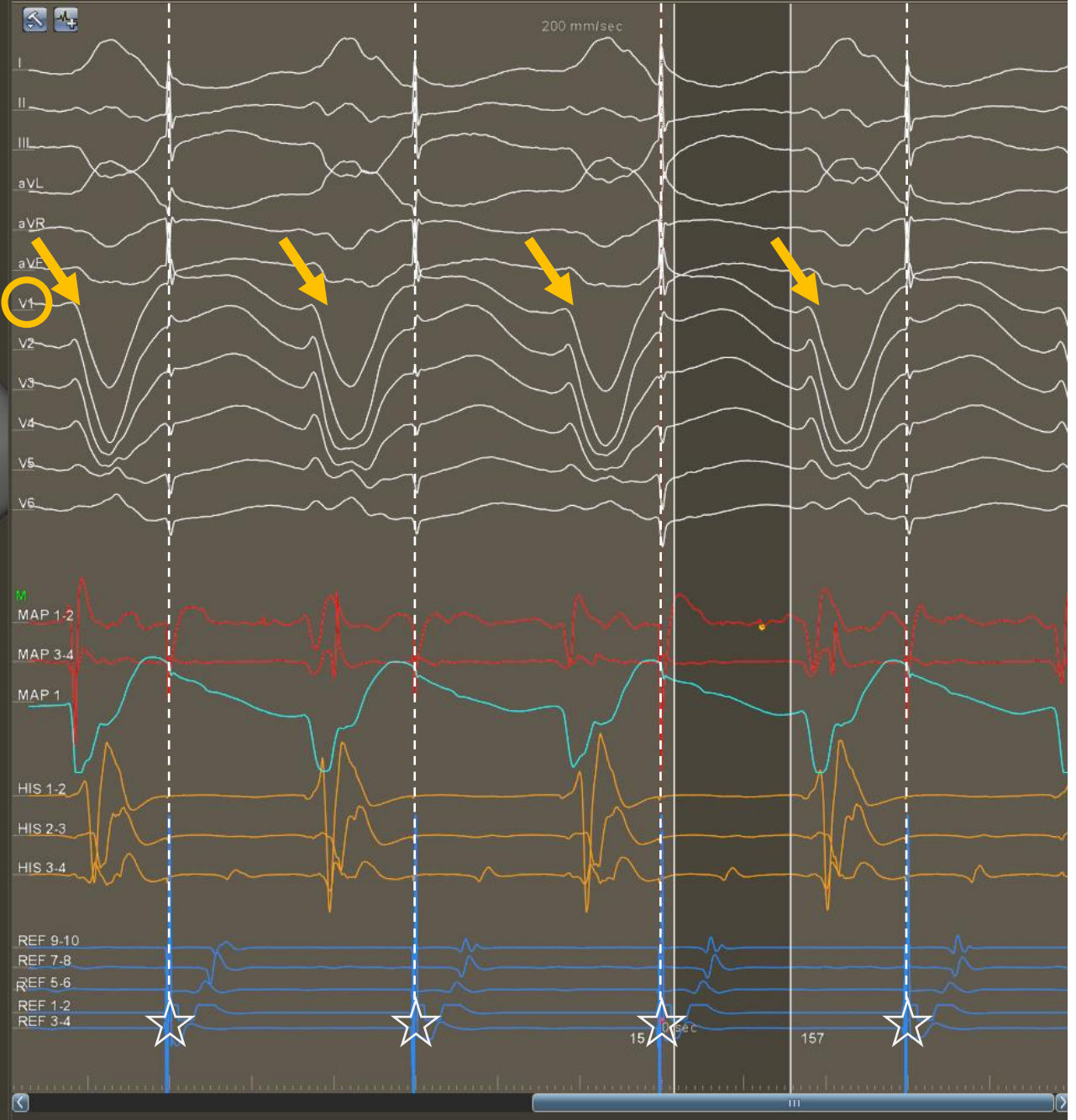


Volume: 124.68 RAO: 5°
Cranial: 0° Swivel: 0°

10%

AP PA LAO RAO LL RL INF SUP

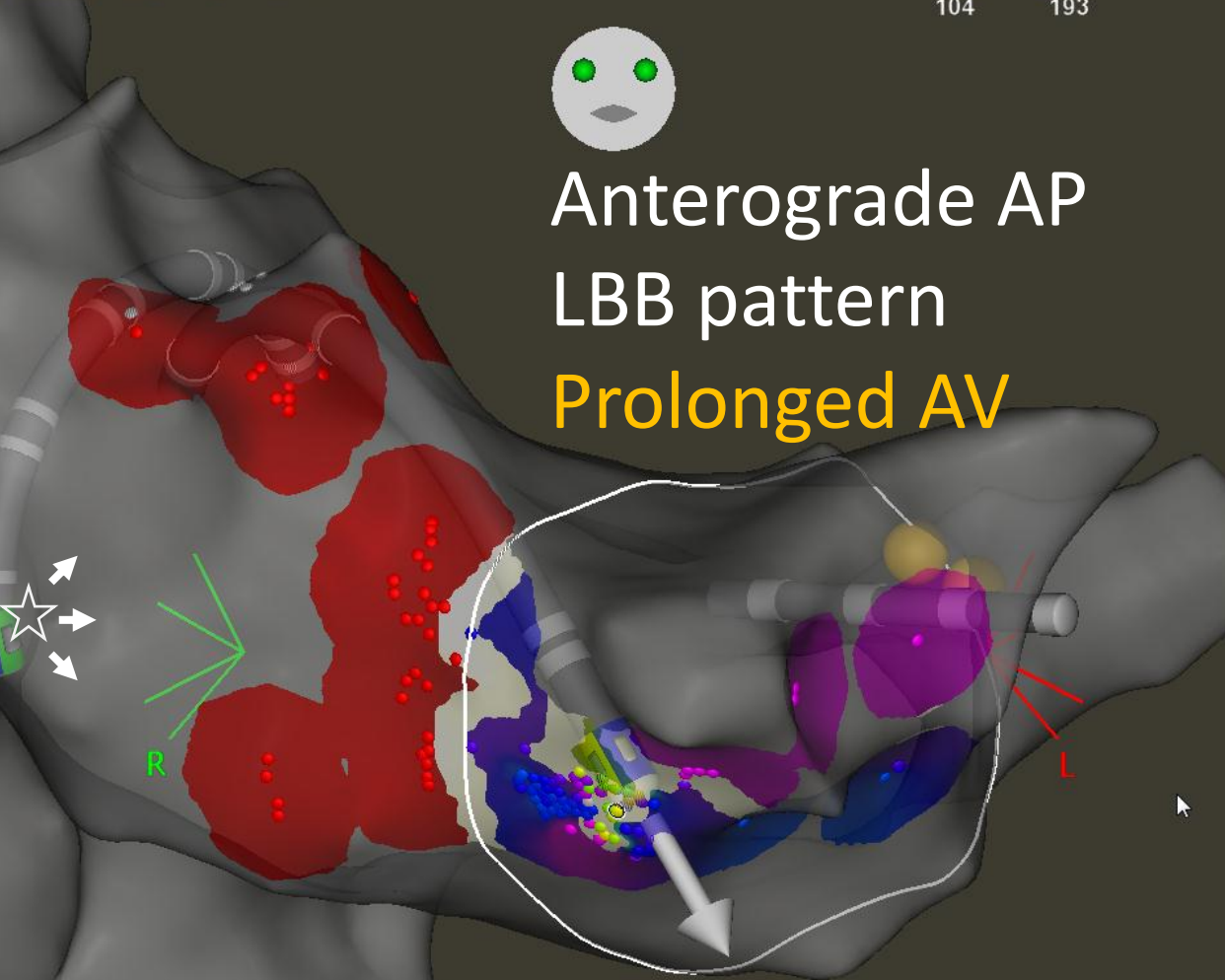
299 CL LAT (ms) 122 Loc 0.38 Bi (mV) 117 Imp (Ω) 5 Force (g)



1-RA (251, 0) Resp



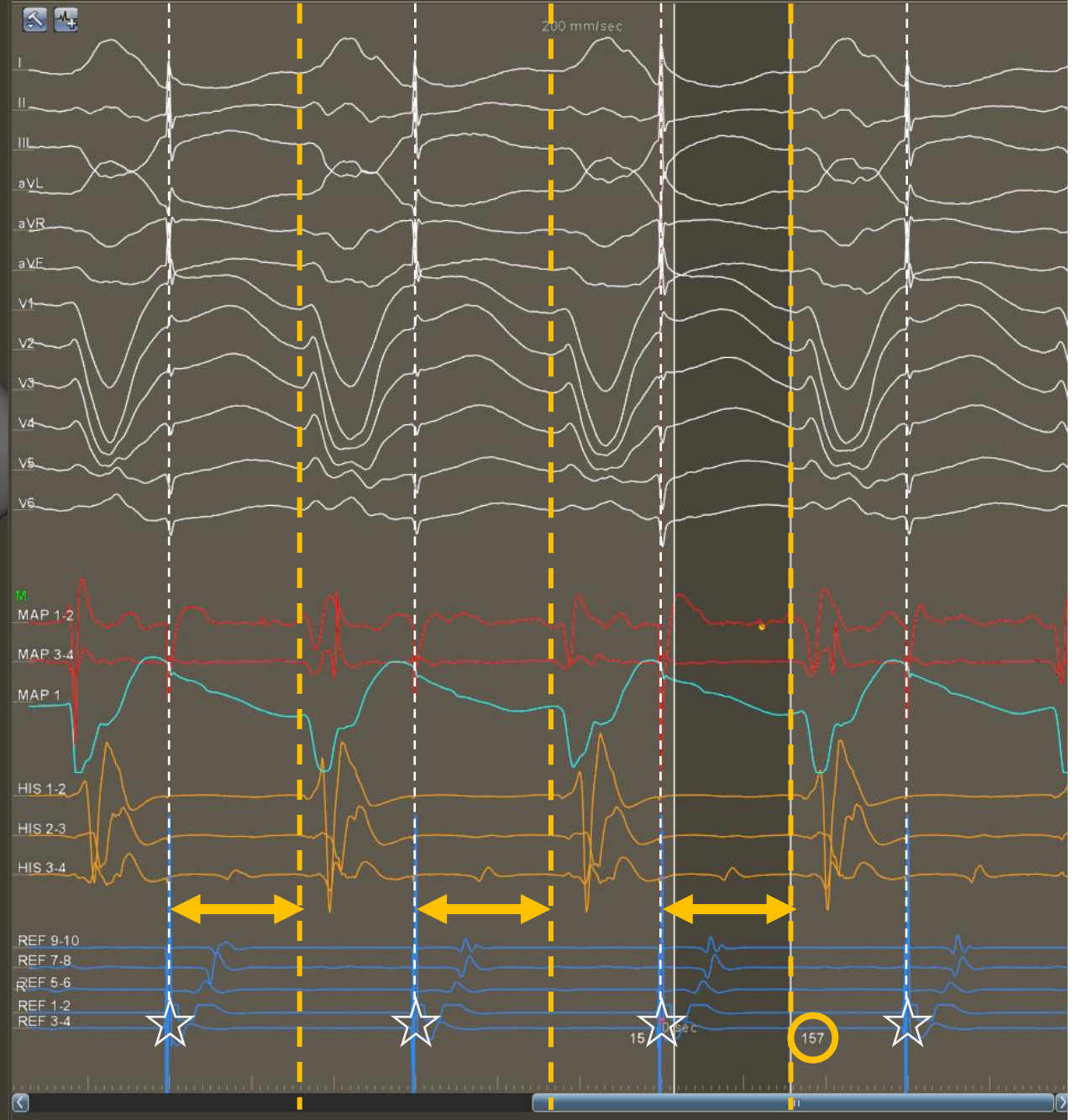
Anterograde AP
LBB pattern
Prolonged AV



Volume: 124.68 RAO: 5°
Cranial: 0° Swivel: 0°

10% AP PA LAO RAO LL RL INF SUP

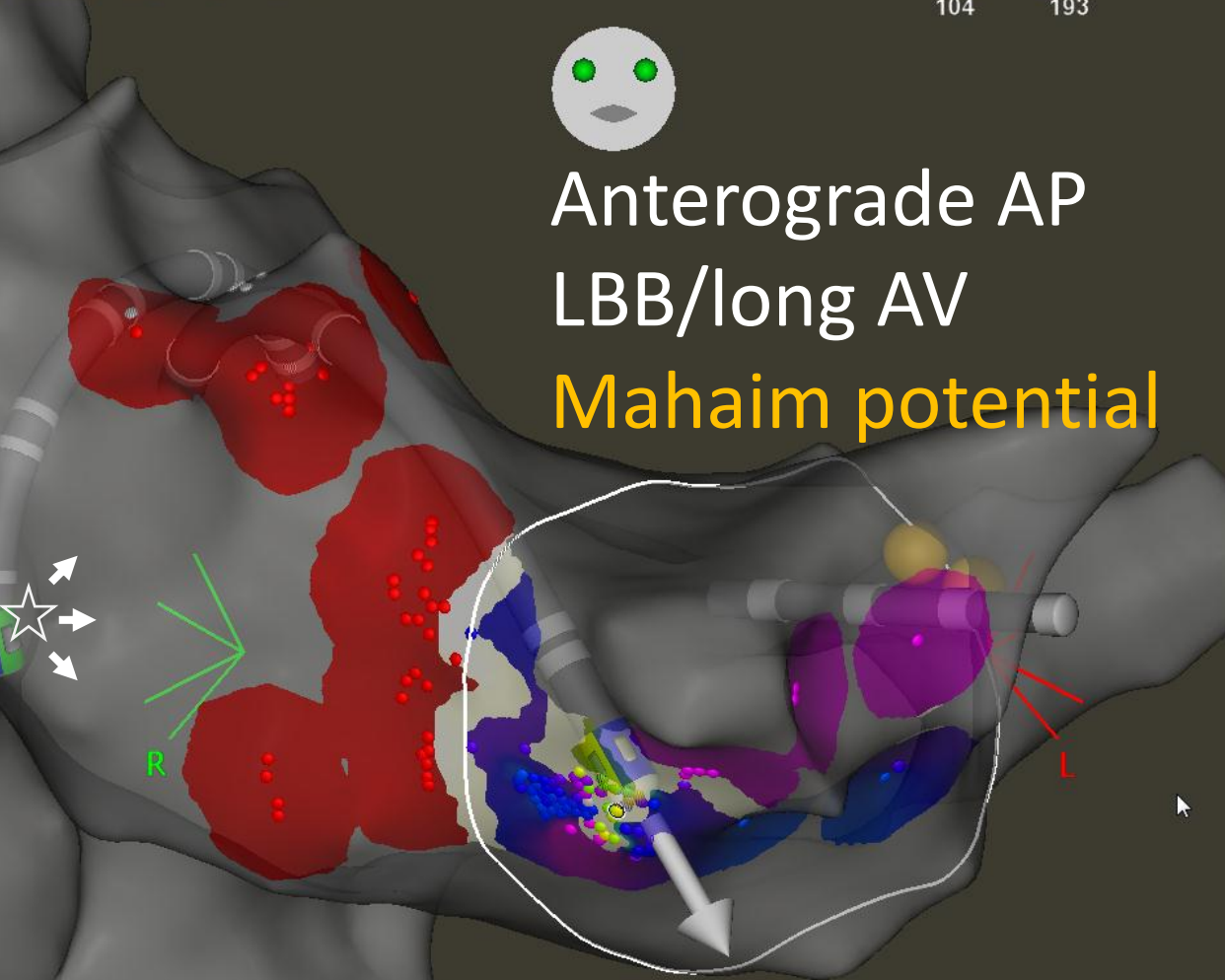
299 CL 122 Loc 0.38 117 5
LAT (ms) Bi (mV) Imp (Ω) Force (g)



1-RA (251, 0) Resp



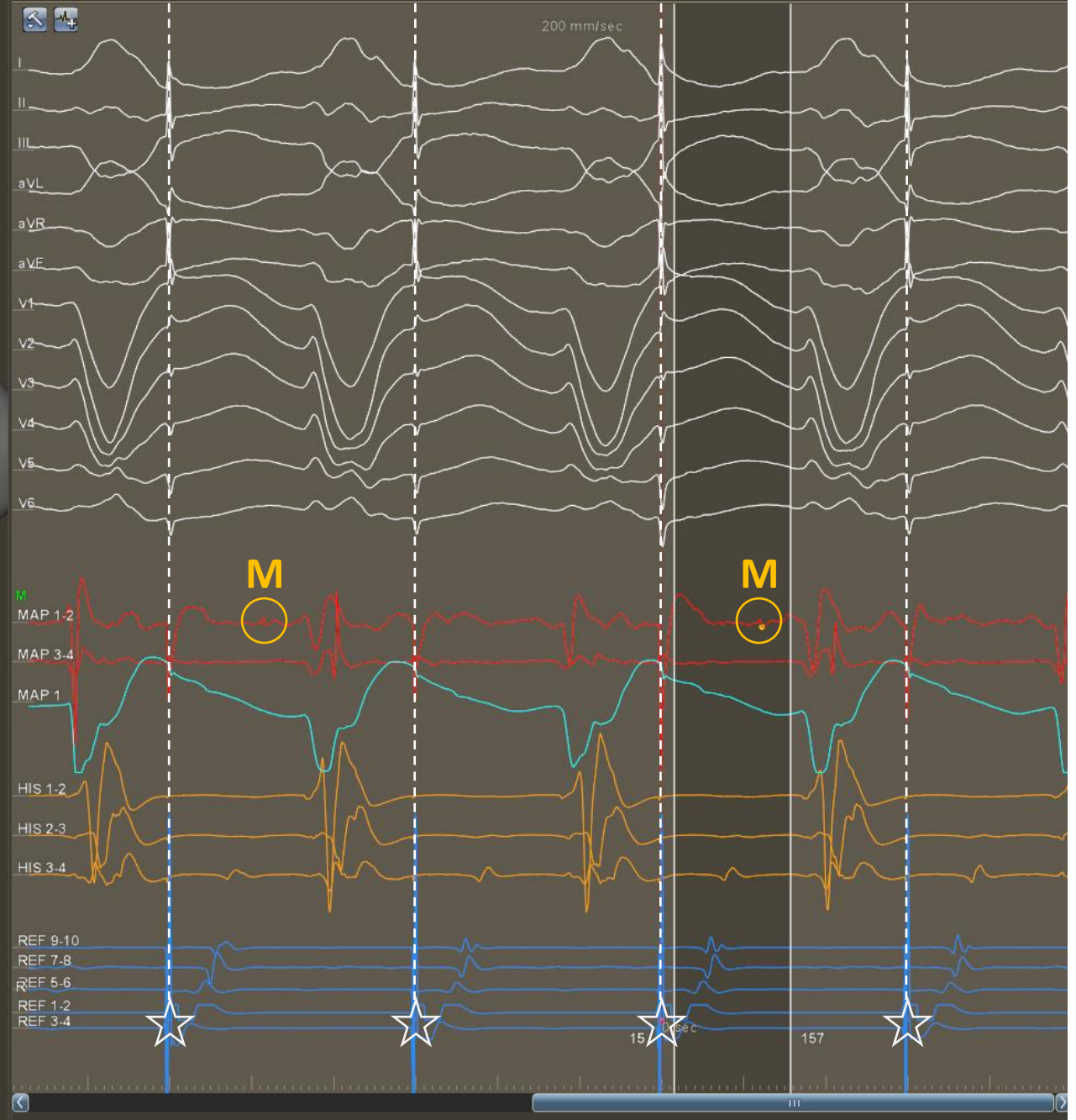
Anterograde AP
LBB/long AV
Mahaim potential



Volume: 124.68 RAO: 5°
Cranial: 0° Swivel: 0°

10% AP PA LAO RAO LL RL INF SUP

299 CL 122 Loc 0.38 117 5
LAT (ms) Bi (mV) Imp (Ω) Force (g)



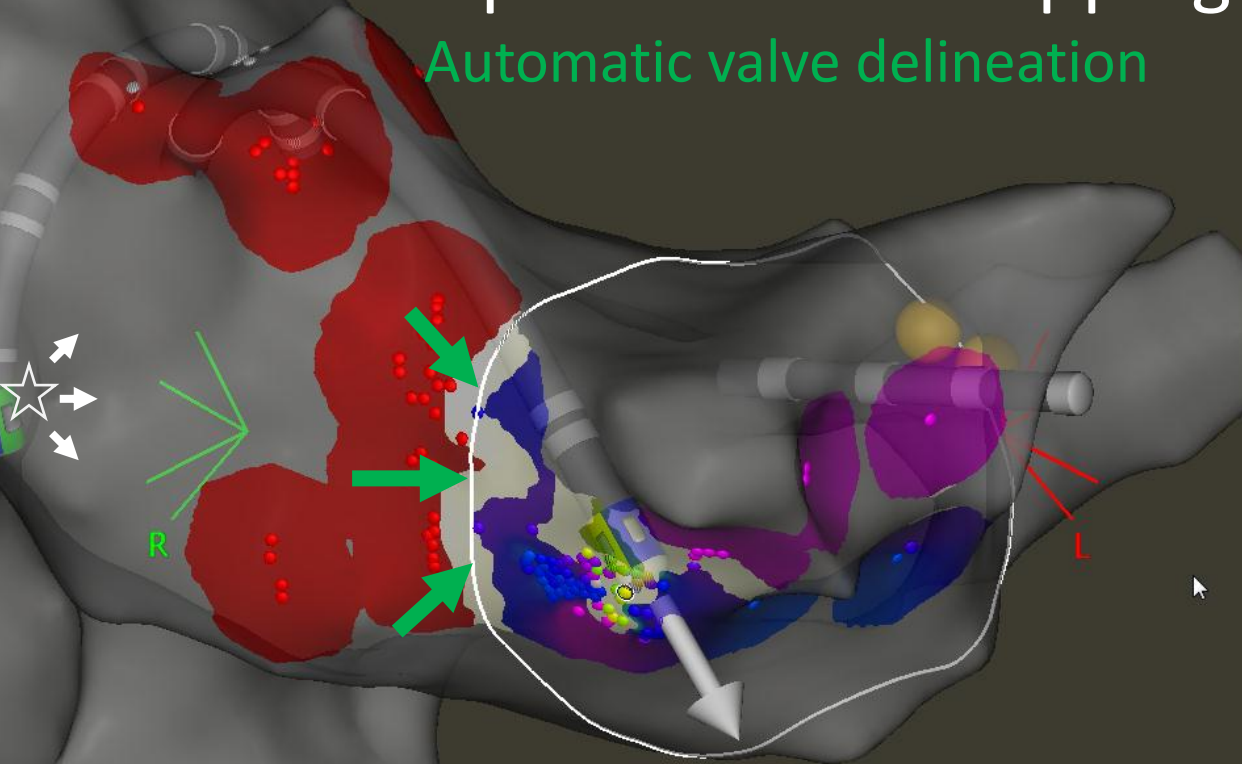
1-RA (251, 0) Resp

19 ms LAT 250 ms
104 193



Open window mapping

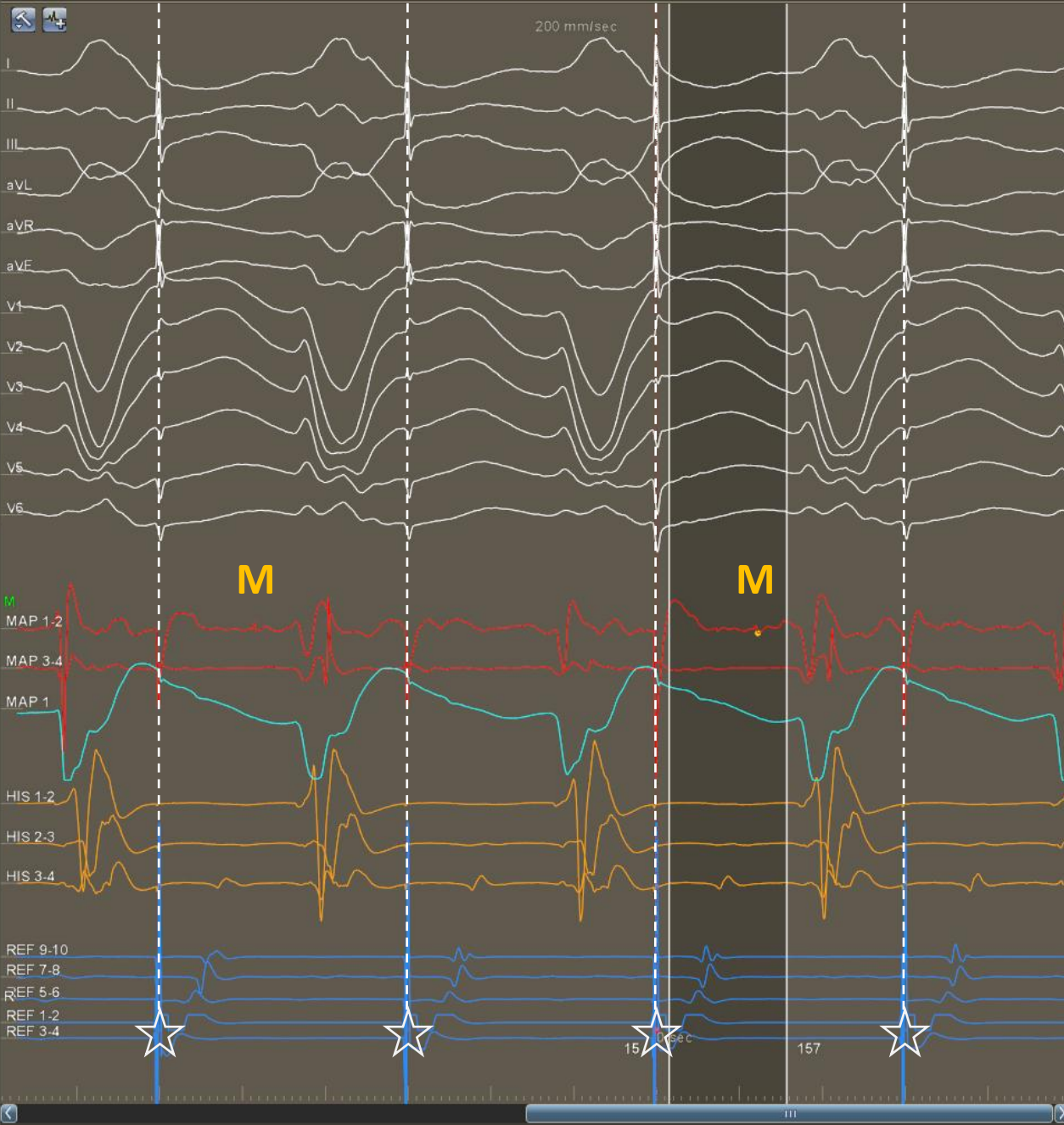
Automatic valve delineation



Volume: 124.68 RAO: 5°
Cranial: 0° Swivel: 0°

10% AP PA LAO RAO LL RL INF SUP

299 CL 122 Loc 0.38 117 5
LAT (ms) Bi (mV) Imp (Ω) Force (g)

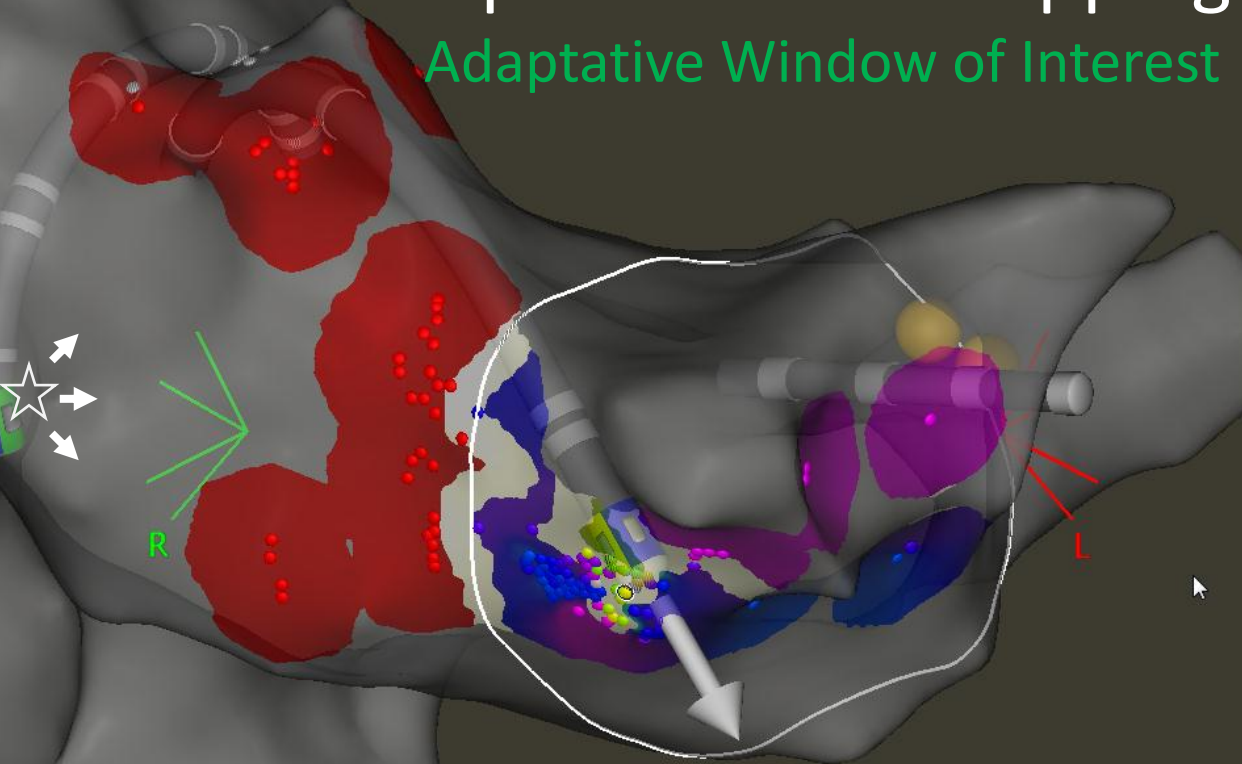


1-RA (251, 0) Resp



Open window mapping

Adaptative Window of Interest

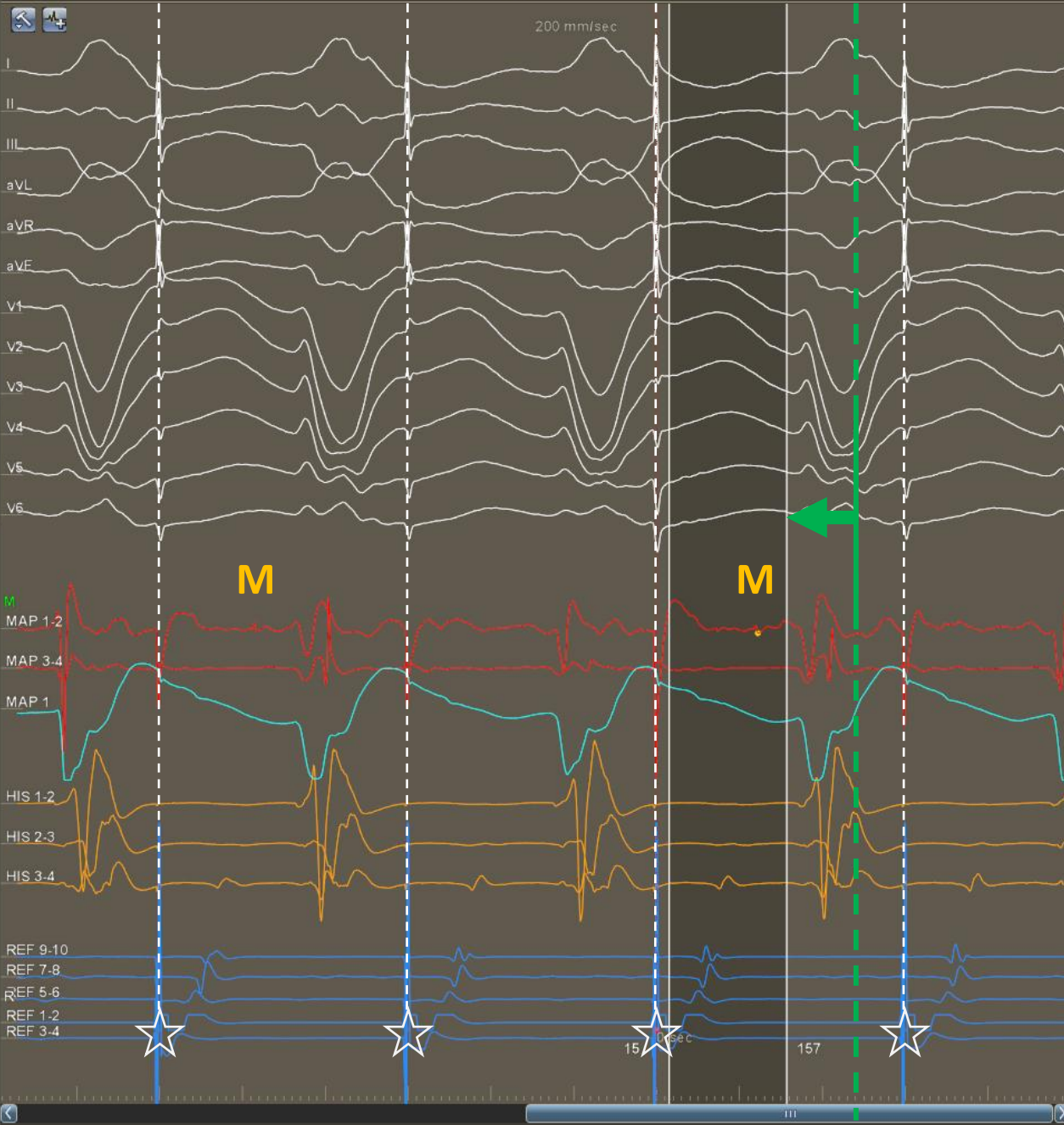


Volume: 124.68 RAO: 5°
Cranial: 0° Swivel: 0°

10%

AP PA LAO RAO LL RL INF SUP

299 CL LAT (ms) 122 Loc 0.38 Bi (mV)
117 Imp (Ω) 5 Force (g)

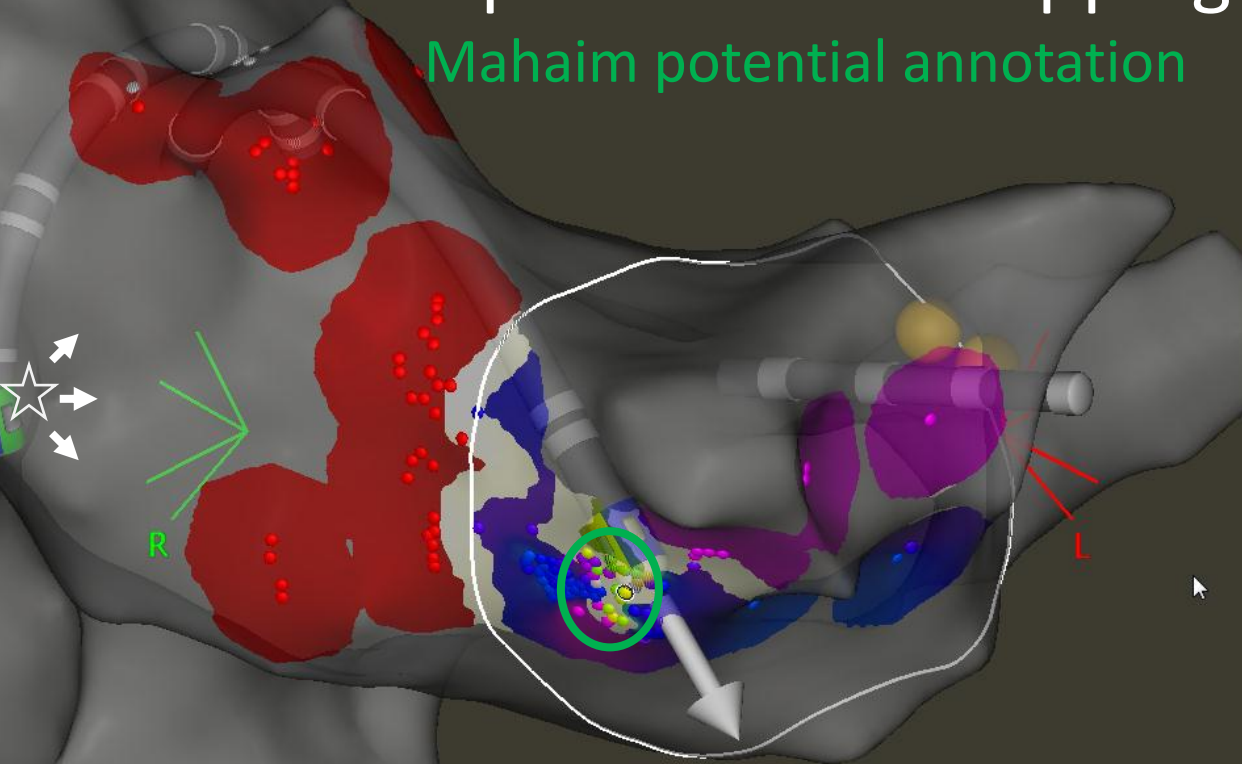


1-RA (251, 0) Resp



Open window mapping

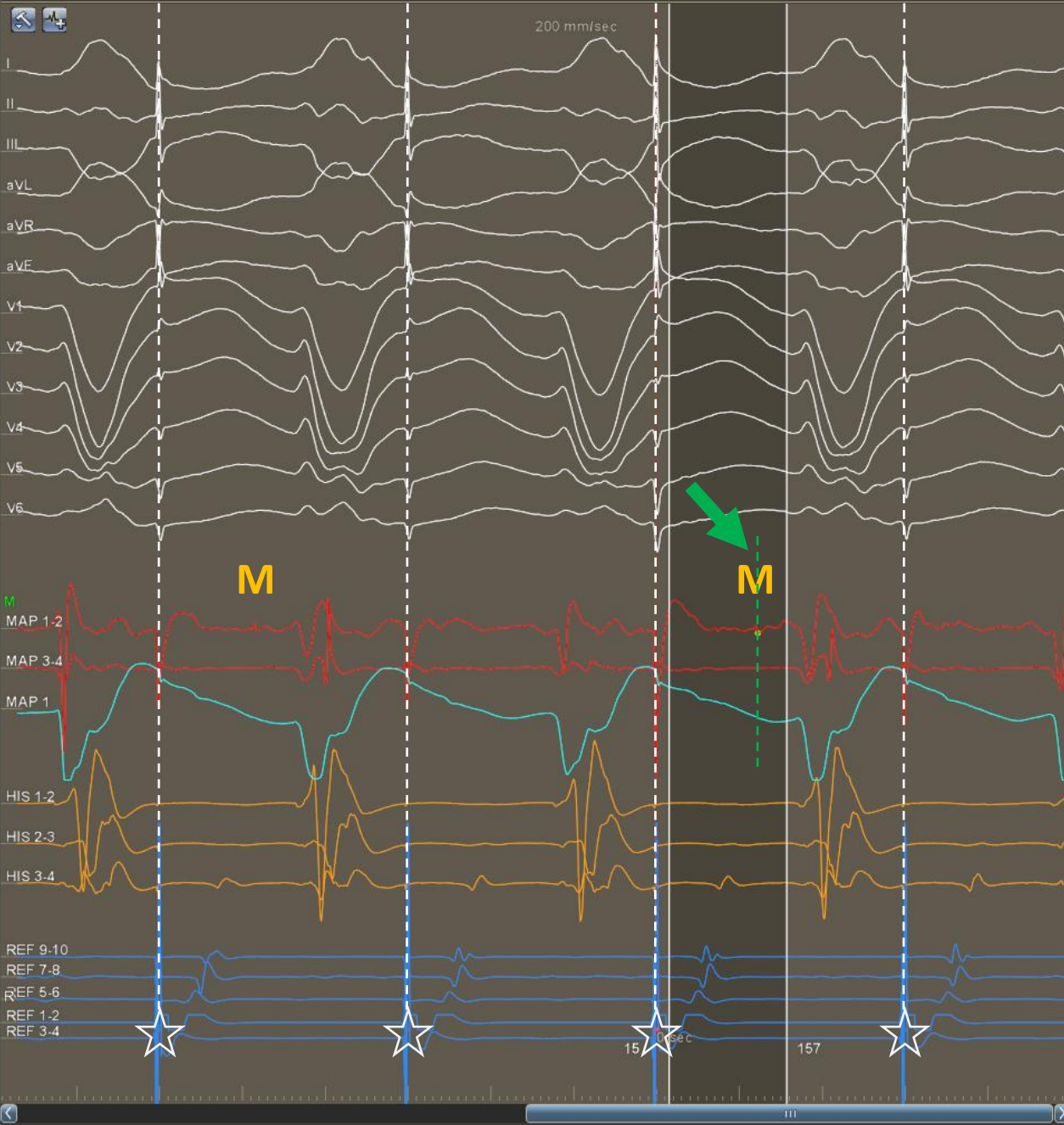
Mahaim potential annotation



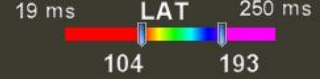
Volume: 124.68 RAO: 5°
Cranial: 0° Swivel: 0°

10% AP PA LAO RAO LL RL INF SUP

299 CL 122 Loc 0.38 117 5
LAT (ms) Bi (mV) Imp (Ω) Force (g)

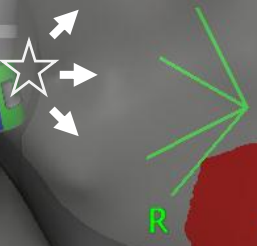


1-RA (251, 0) Resp



Open window mapping

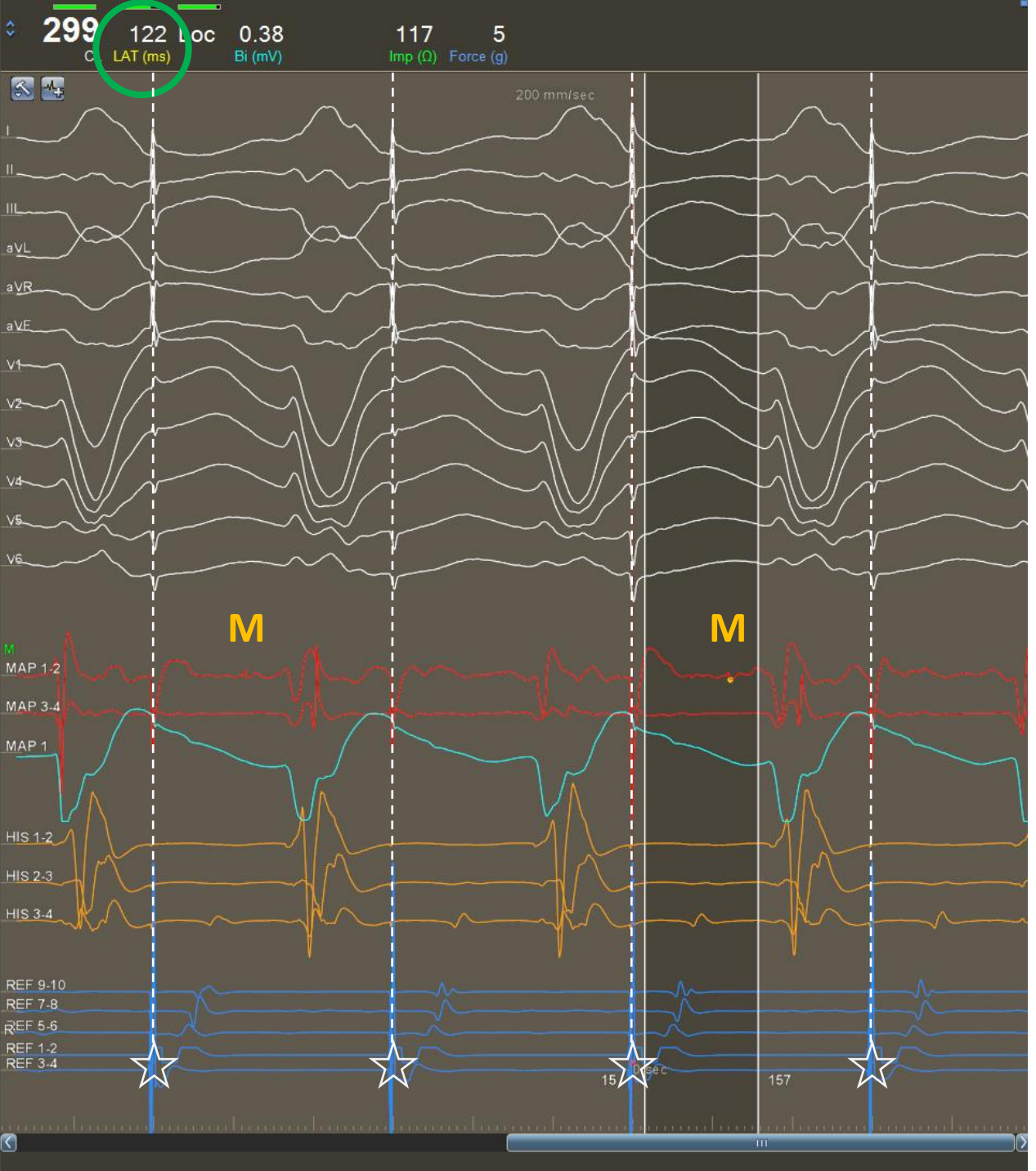
LAT value +122ms



Volume: 124.68 RAO: 5 °
Cranial: 0 ° Swivel: 0 °

10%

AP PA LAO RAO LL RL INF SUP

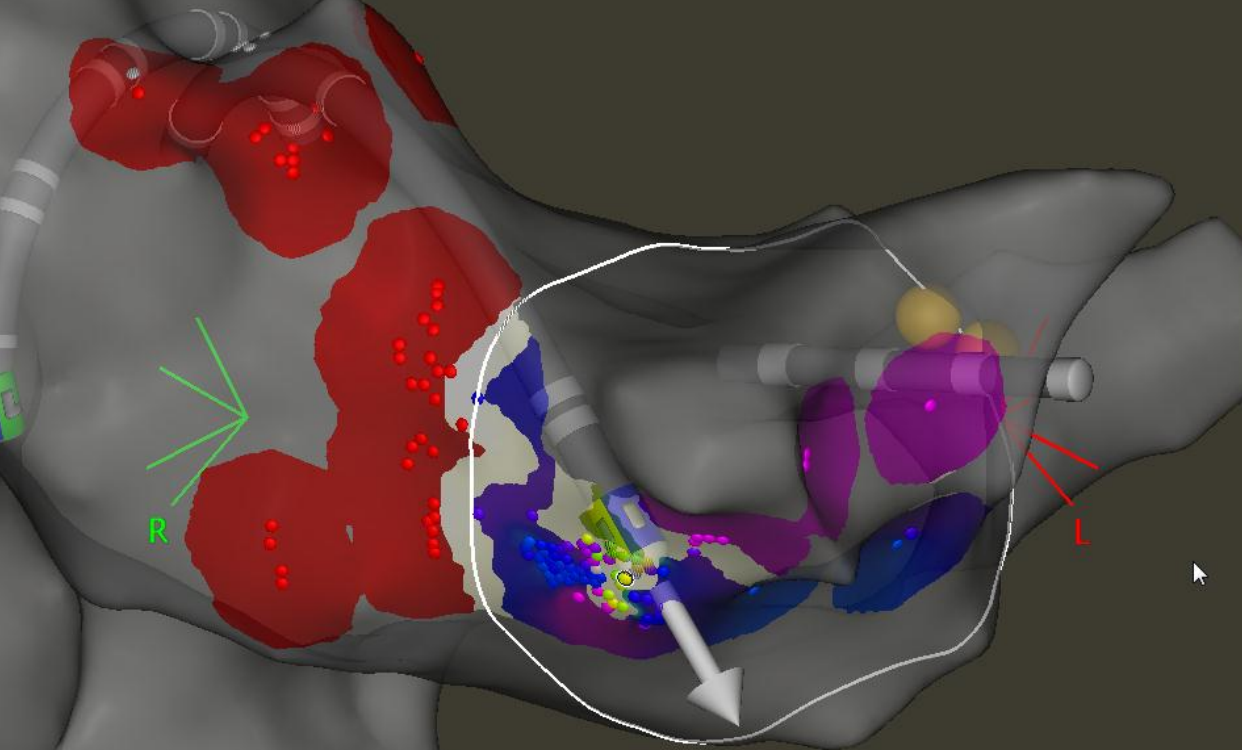


1-RA (251, 0) Resp

19 ms LAT 250 ms
104 193



Mechanical Bump



R

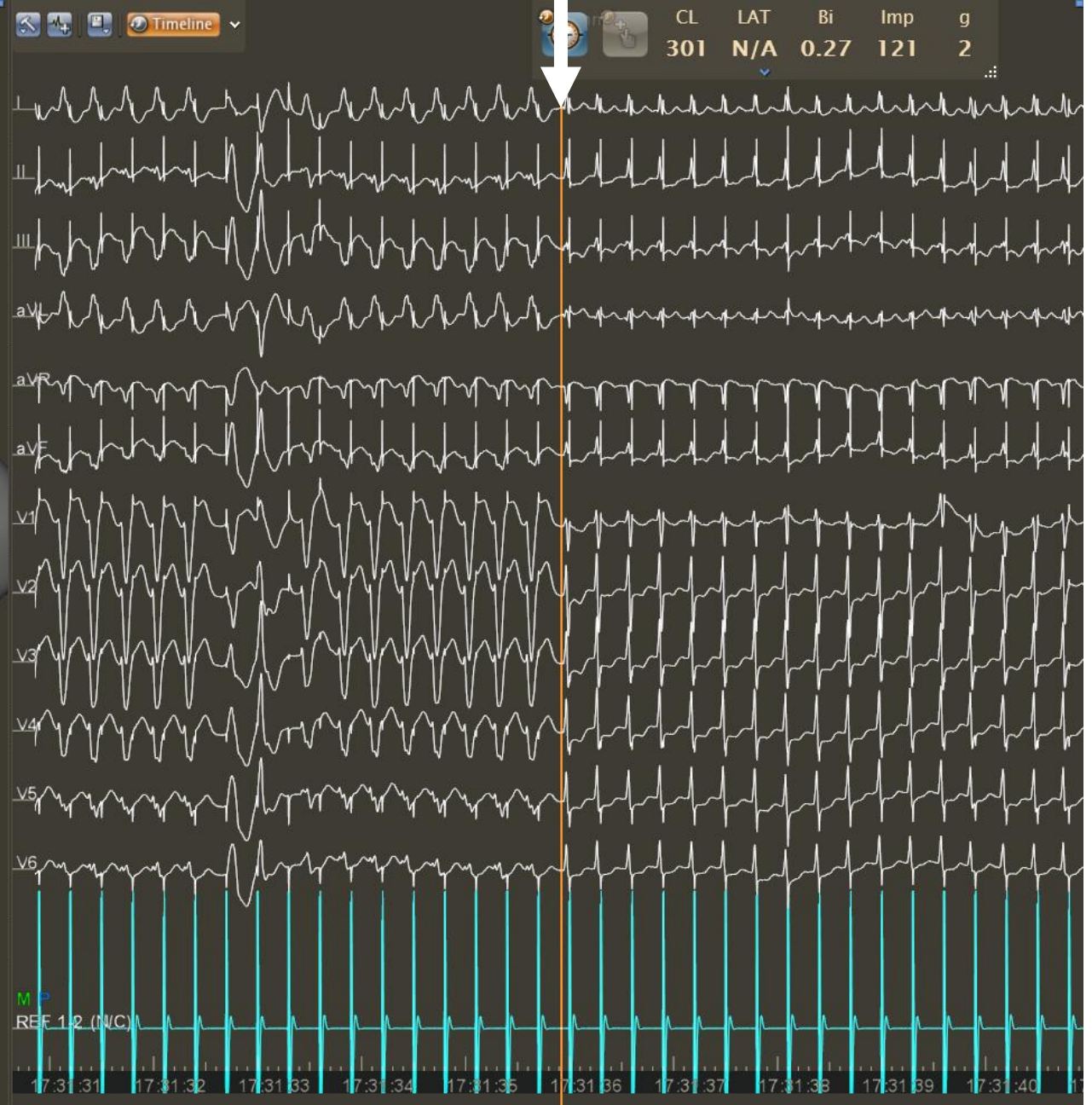
L

Volume: 124.68 RAO: 5°
Cranial: 0° Swivel: 0°



10%

AP PA LAO RAO LL RL INF SUP



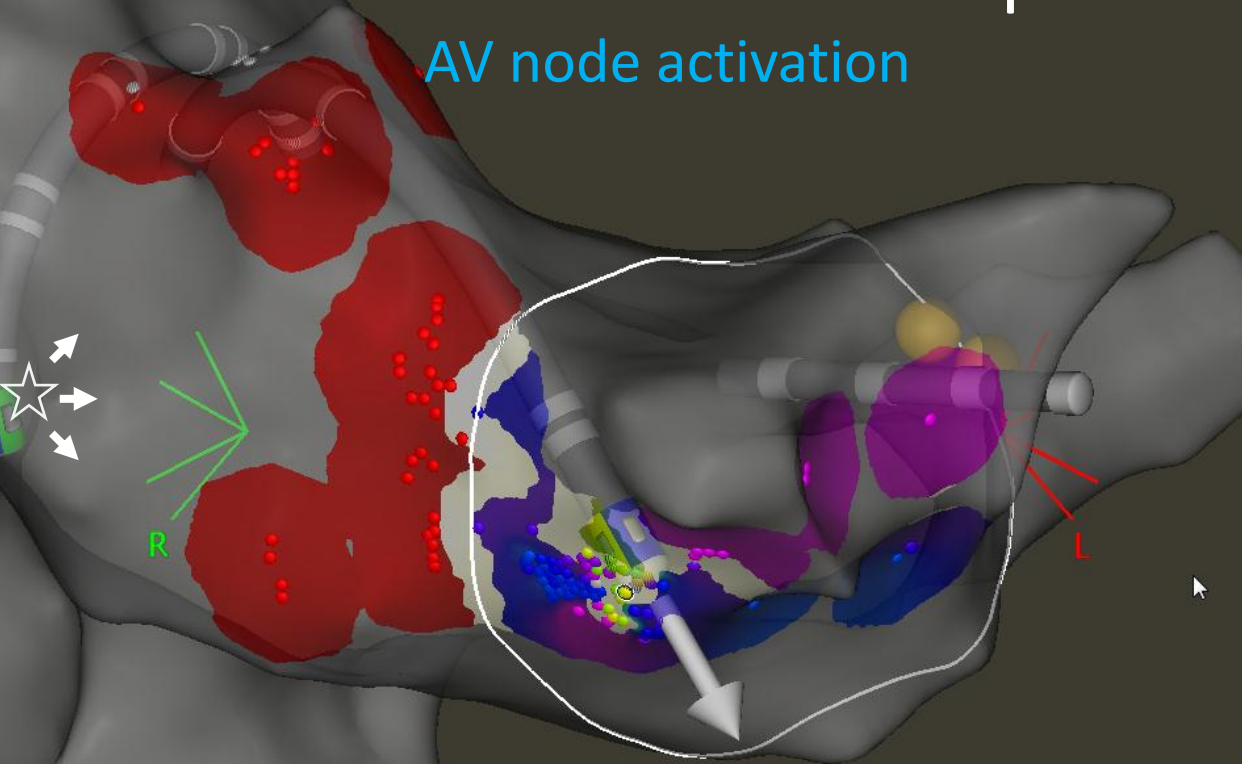
Timeline controls and status bar including: Respiration, Point, Ablation, VisiTag, Pacing, PaS.

1-RA (251, 0) Resp



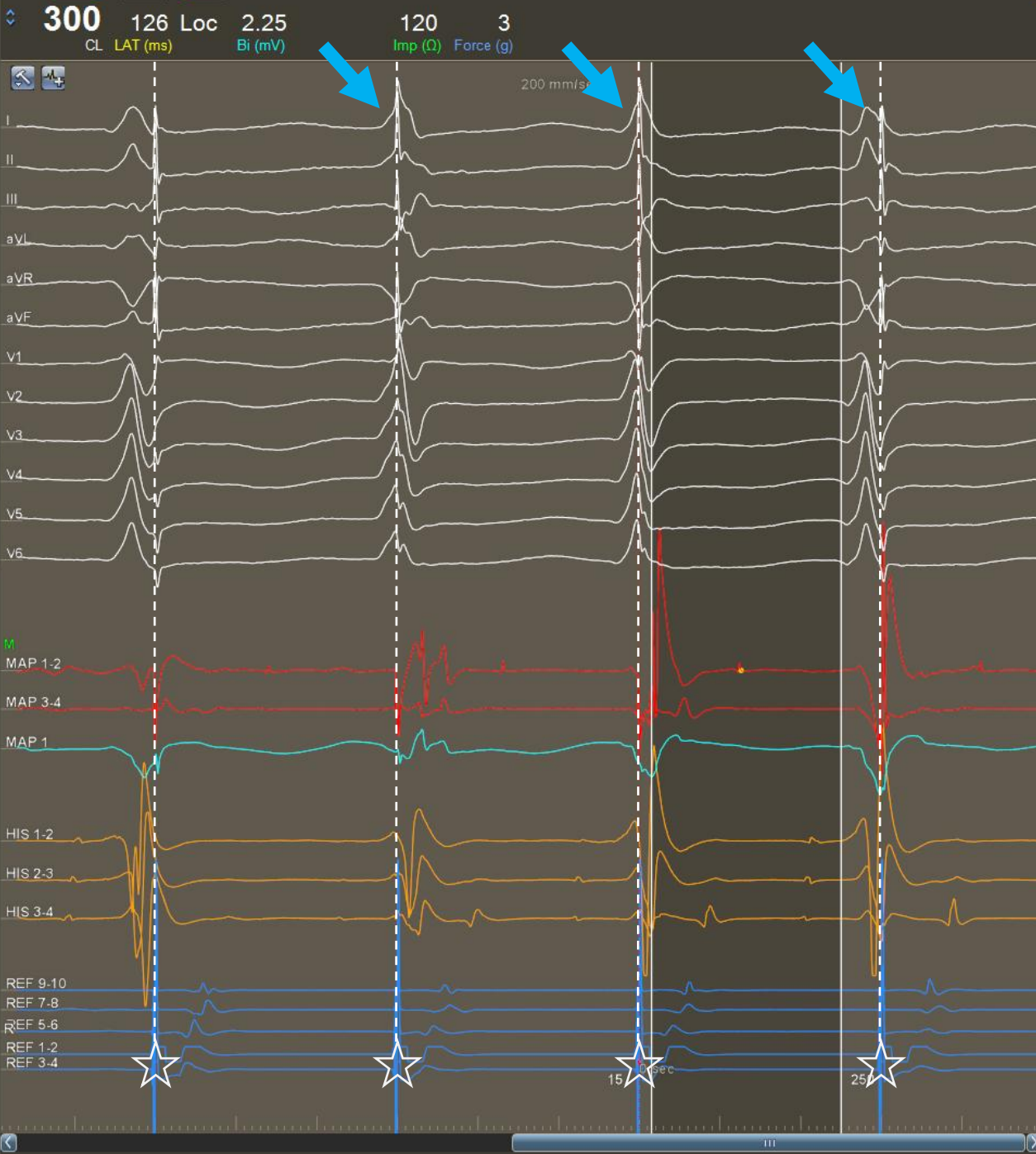
Mechanical Bump

AV node activation



Volume: 124.68 RAO: 5°
Cranial: 0° Swivel: 0°

10% AP PA LAO RAO LL RL INF SUP



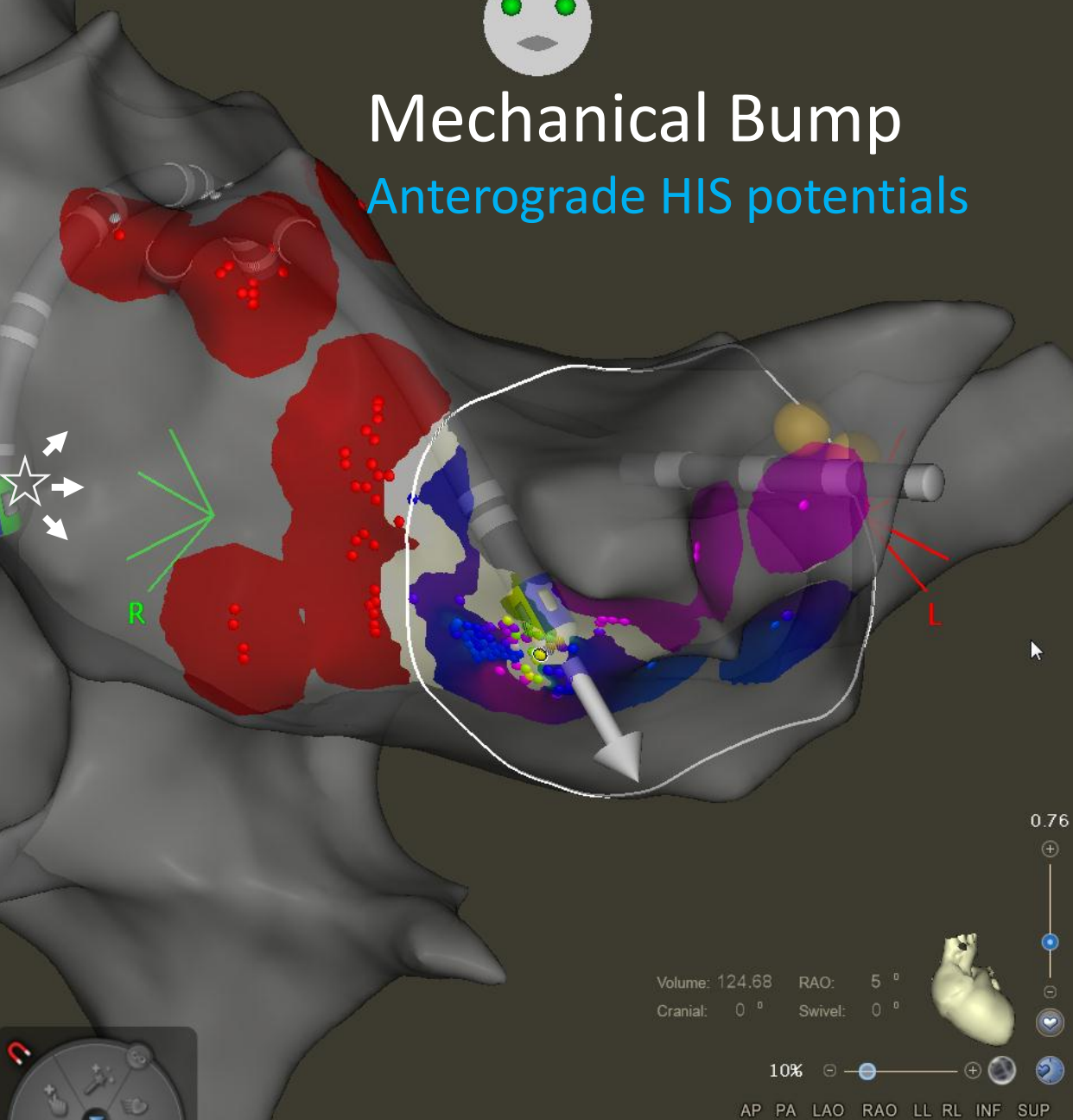
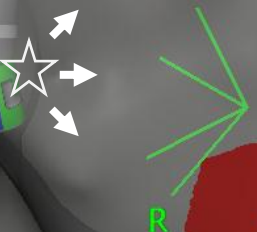
1-RA (251, 0) Resp

LAT 19 ms 104 193 250 ms



Mechanical Bump

Anterograde HIS potentials

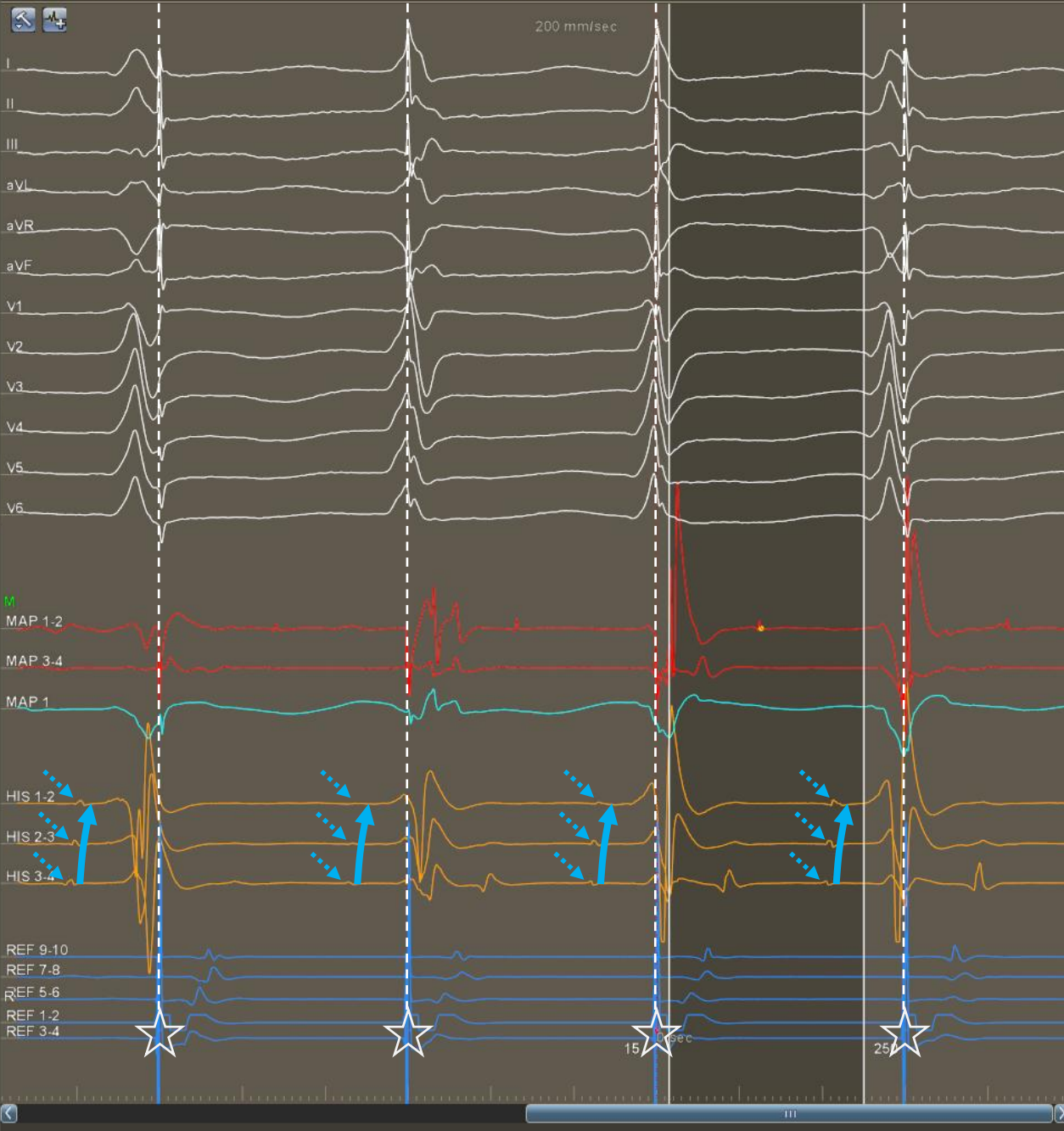


Volume: 124.68 RAO: 5°
Cranial: 0° Swivel: 0°

10% [Zoom slider]

AP PA LAO RAO LL RL INF SUP

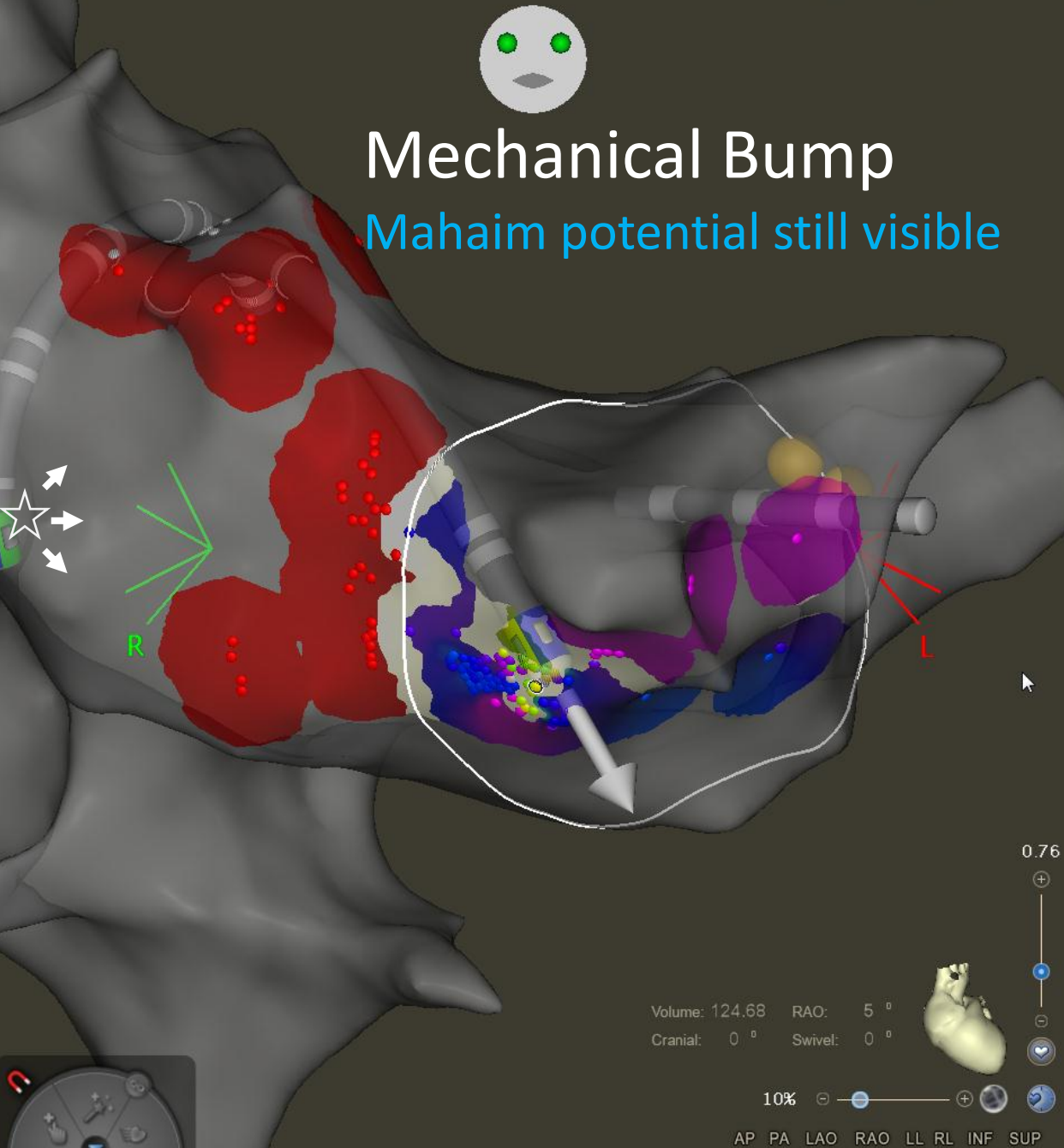
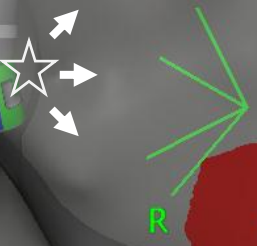
300 CL 126 Loc 2.25 120 3
LAT (ms) Bi (mV) Imp (Ω) Force (g)



1-RA (251, 0) Resp



Mechanical Bump
Mahaim potential still visible

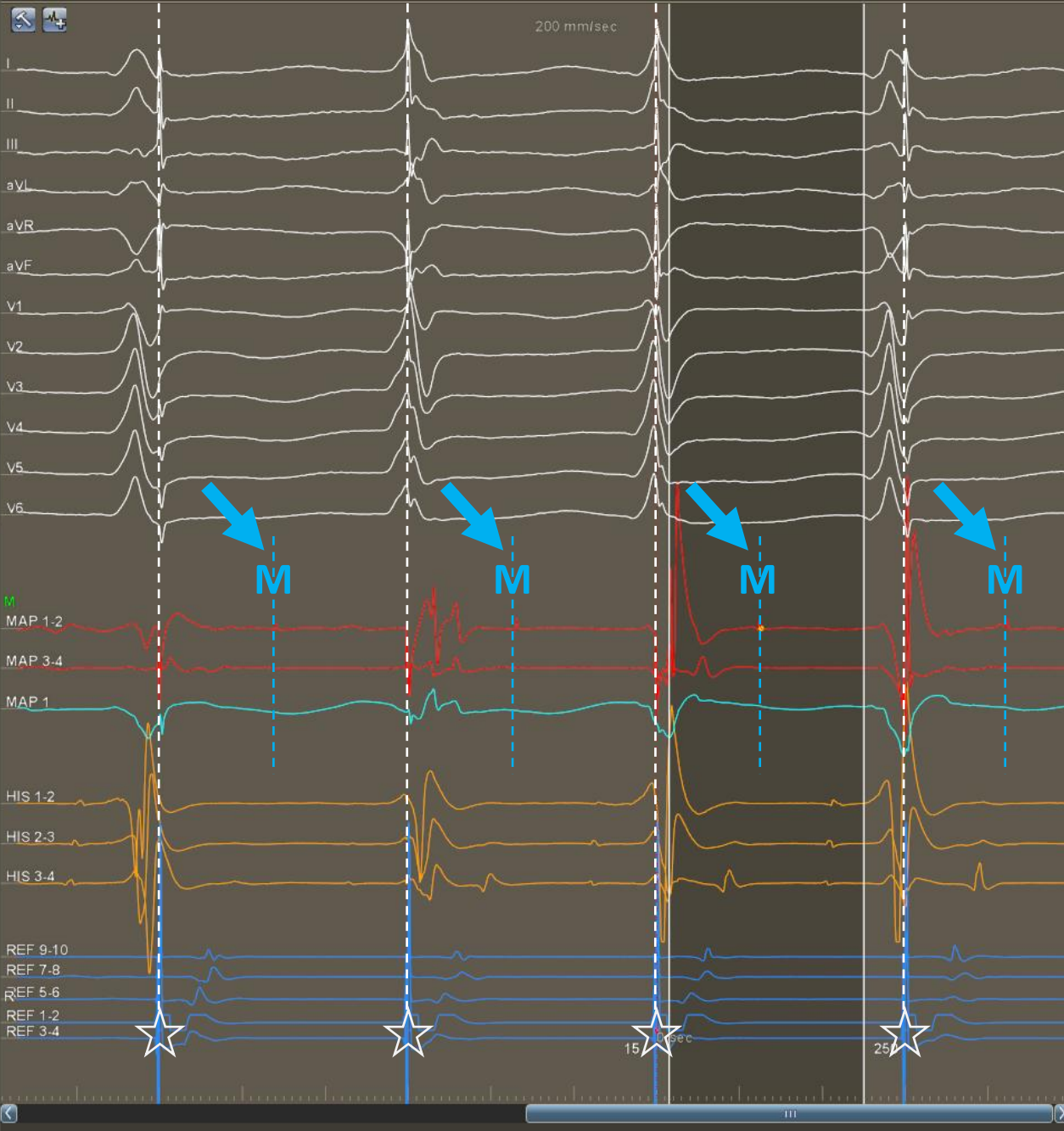


Volume: 124.68 RAO: 5°
Cranial: 0° Swivel: 0°

10%

AP PA LAO RAO LL RL INF SUP

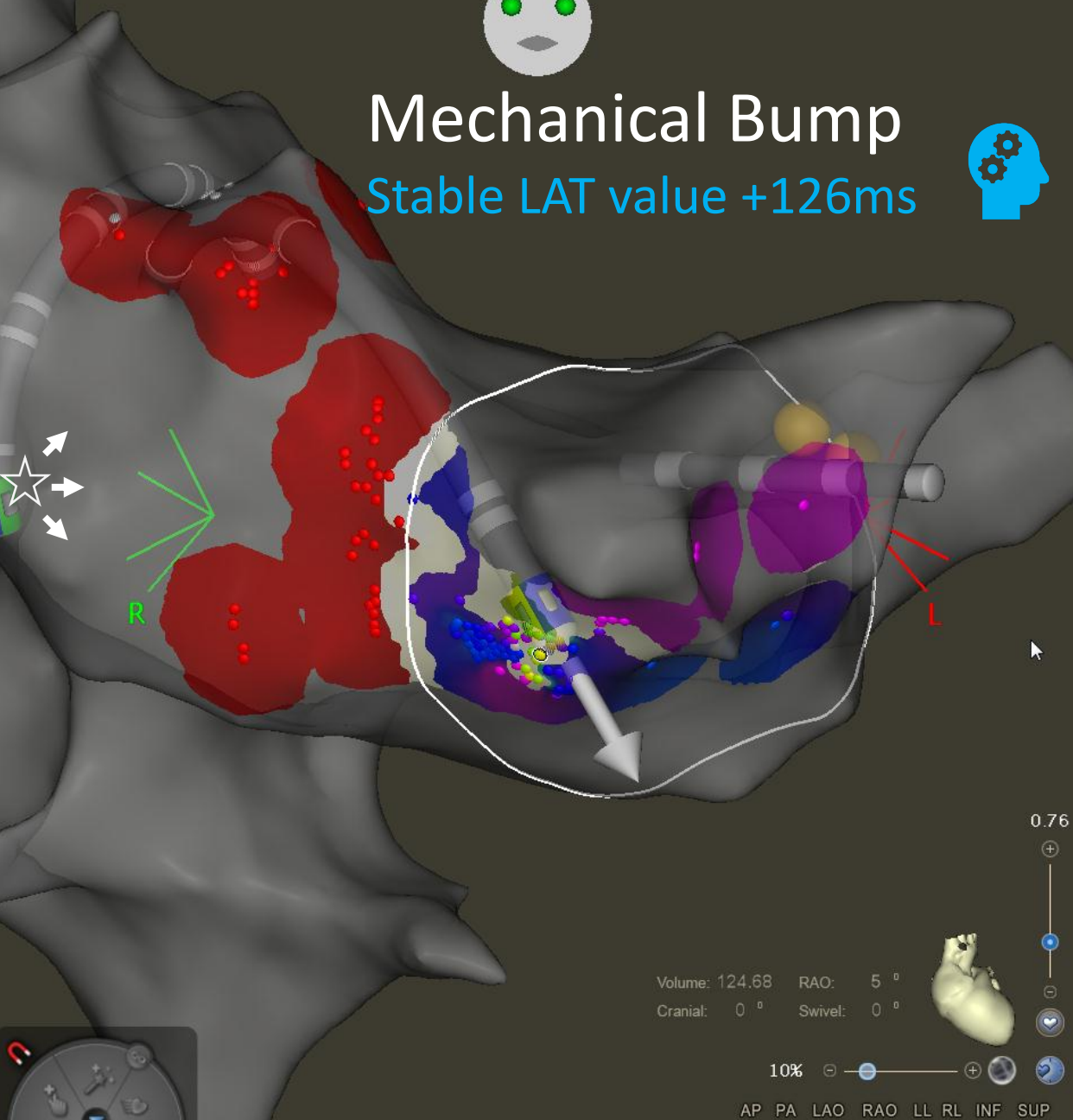
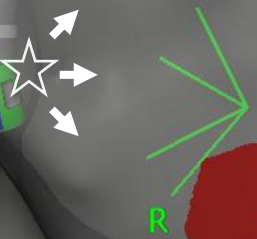
300 CL 126 Loc 2.25 120 3
LAT (ms) Bi (mV) Imp (Ω) Force (g)



1-RA (251, 0) Resp



Mechanical Bump
Stable LAT value +126ms

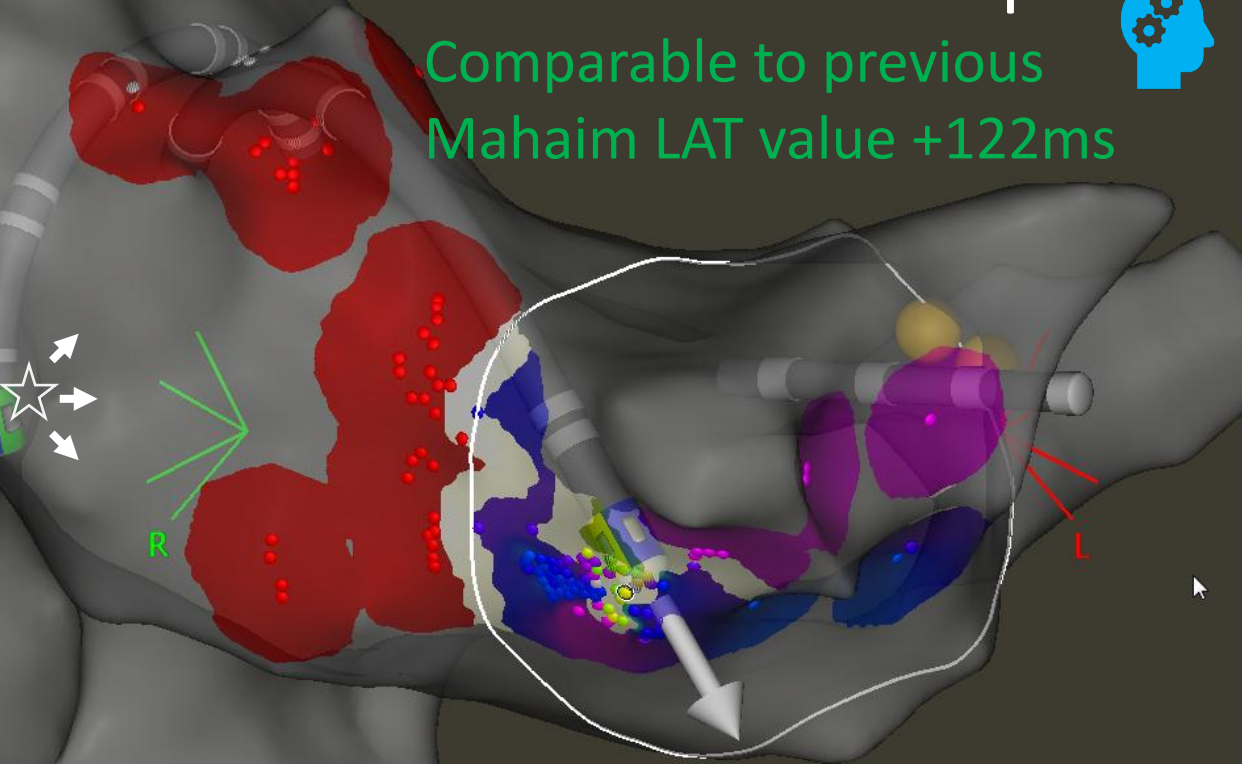
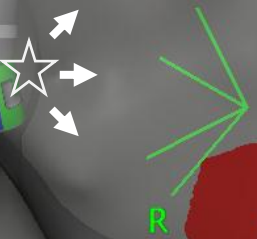


1-RA (251, 0) Resp



Mechanical Bump

Comparable to previous Mahaim LAT value +122ms

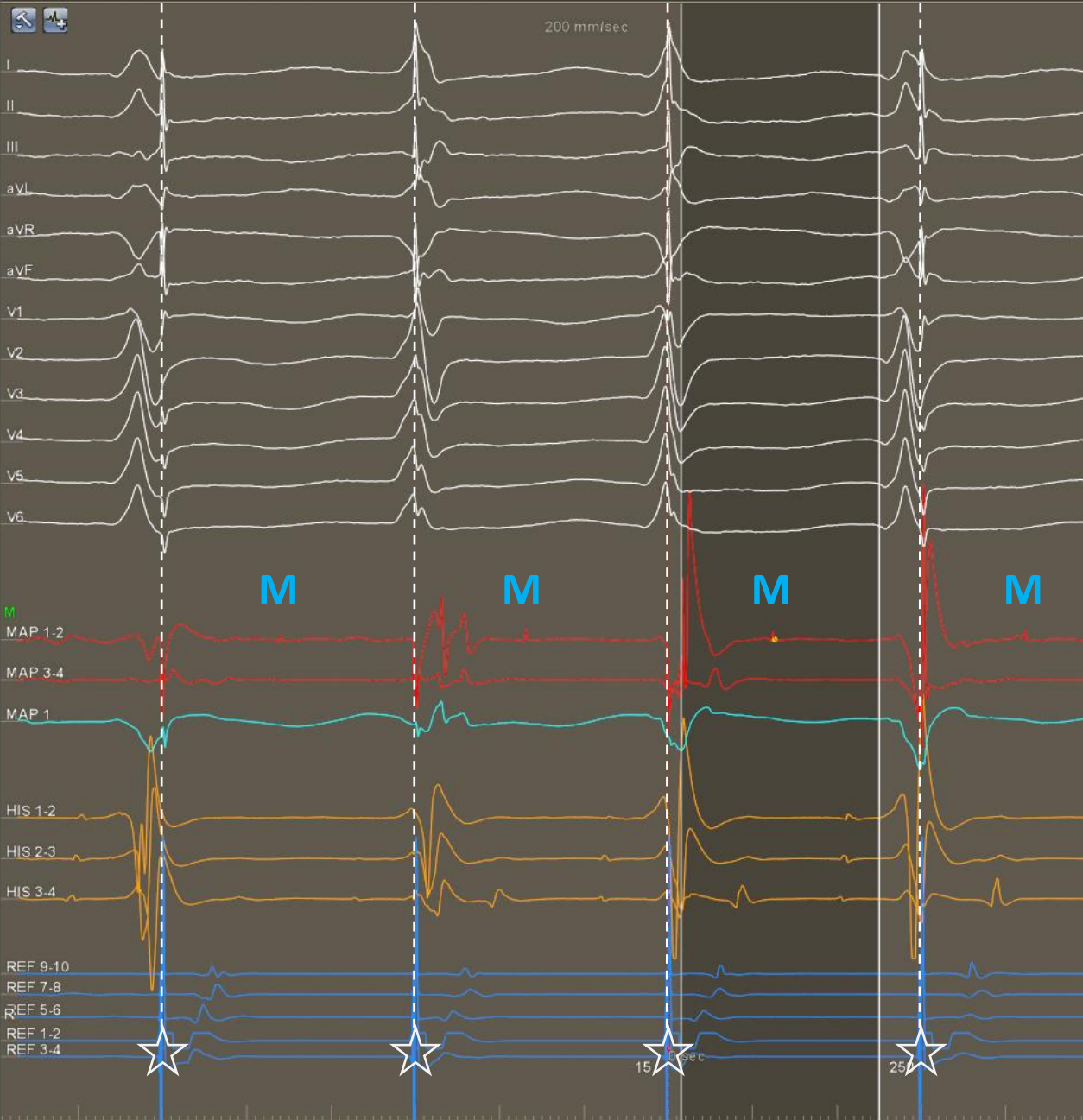


Volume: 124.68 RAO: 5°
Cranial: 0° Swivel: 0°

10%

AP PA LAO RAO LL RL INF SUP

300 CL 126 Loc 2.25 120 3
LAT (ms) Bi (mV) Imp (Ω) Force (g)

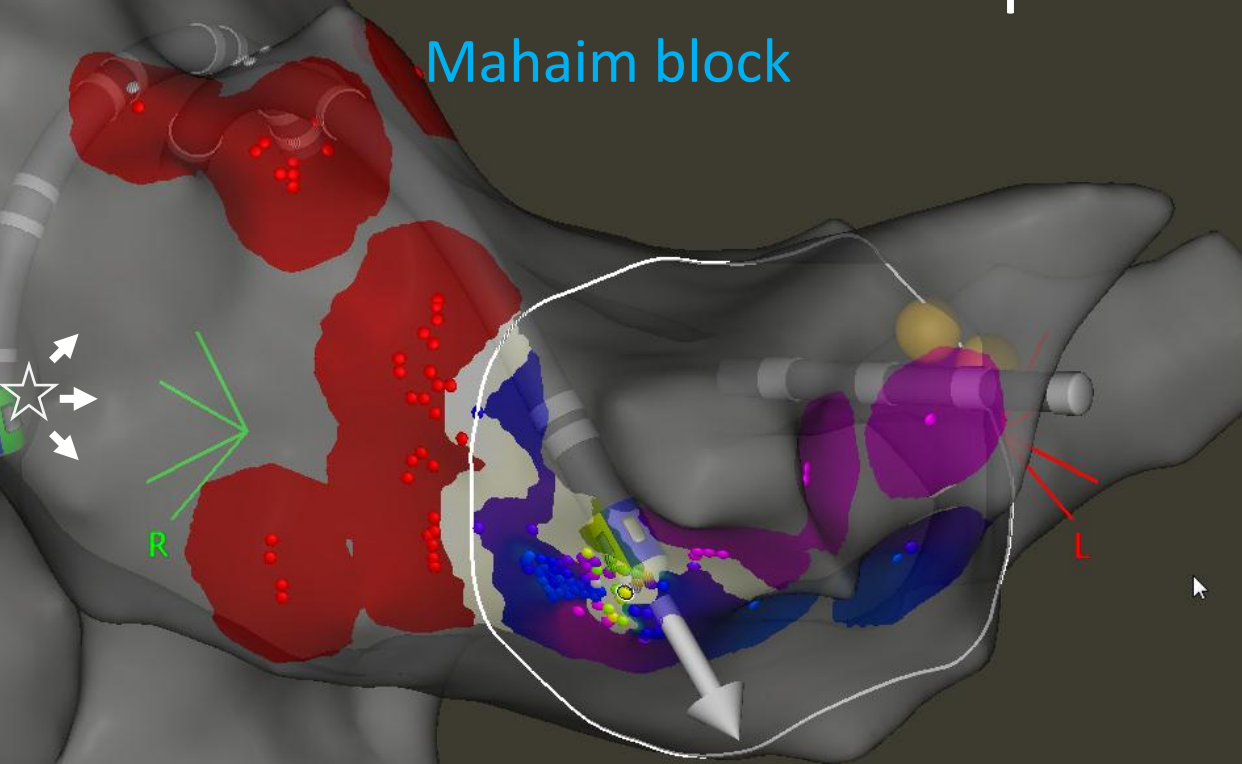
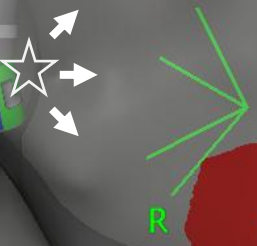


1-RA (251, 0) Resp



Mechanical Bump

Mahaim block

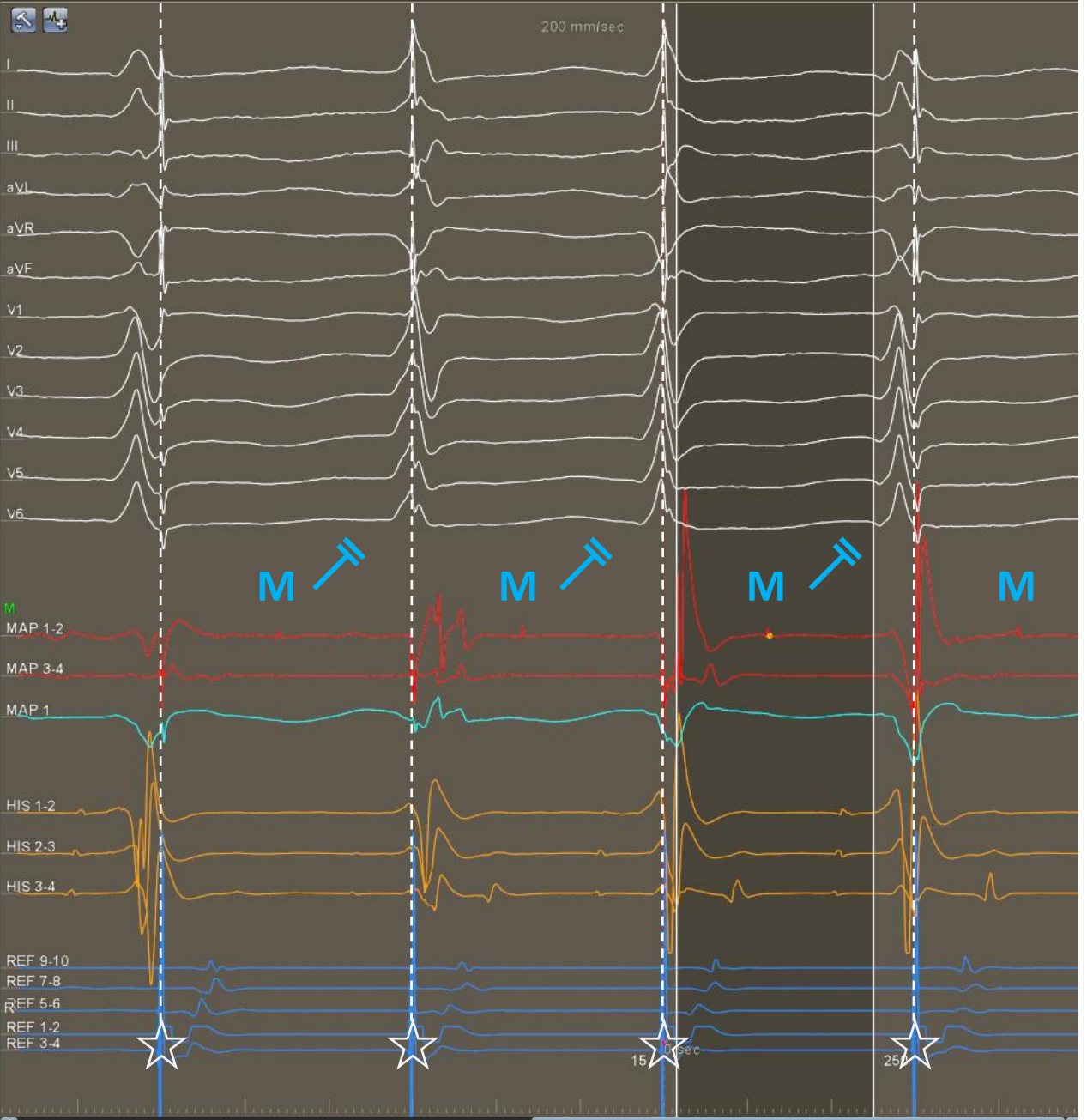


Volume: 124.68 RAO: 5°
Cranial: 0° Swivel: 0°

10% [Slider]

AP PA LAO RAO LL RL INF SUP

300 CL 126 Loc 2.25 120 3
LAT (ms) Bi (mV) Imp (Ω) Force (g)



Final lesion set

